

# ARTS/LIVE

Art News from West Plains Council on the Arts

**Upcoming Events:** Nov. 2-27—One Life: The Mask of Lincoln Smithsonian Exhibition  
Nov. 3 (7PM and 8PM)— Performance, Danny Riley as Lincoln, Exhibit Reception following performance  
Nov. 6, (2:30PM) - Community Messiah Sing  
Jan. 30-Mar. 5—Karen Eubank Art Exhibit, reception February 18, noon-2 p.m.  
February 25—5th Annual West Plains BrewFest

## "ISOLATION AND CONNECTIONS" PHOTO EXHIBIT AND 2016 SYMPOSIUM OPENING RECEPTION



Photo by Kelli Albin

Four area photographers will be featured in a photo exhibit themed "Isolation and Connections in the Ozarks." Artists providing works include Kelly Albin, Bruce Carr, Dennis Crider, and Patty Ingalls. The exhibit will be featured at the Symposium Opening Reception Thursday, September 22, 5-7 p.m.

The reception is admission free and sponsored by the West Plains Council on the Arts with financial support from the Missouri Arts Council, a state agency.

The exhibit was prompted by the theme of the Ozarks Studies Symposium. The artists were invited to provide their own distinctive interpretation of the Symposium theme, to be represented through their photography. The exhibit demonstrates the artists' view of how the Ozarks region has been viewed as a place of isolation and/or connection.

This fascinating exhibit will be on display September 12 through October 5 in the Gallery at the Center located on the mezzanine at the West Plains Civic Center. The exhibit is available for viewing during normal operating hours for the Civic Center.

## 10th Annual Ozarks Studies Symposium September 23-24, 2016 "Isolation and Connections"

The theme of the tenth annual Ozarks Studies Symposium is "Isolation and Connections." All presentations will be held at the West Plains Civic Center, are free of charge, and everyone is invited to attend.

The symposium features presentations by scholars, writers, artists and musicians from around the country who will provide insight into the many facets of the Ozarks.

Dr. Phil Howerton, assistant professor of English at MSU-WP and symposium coordinator, said the symposium reflects MSU-WP's commitment to serve as a link between the predominantly rural region it serves and the world of higher education and scholarship, facilitating communication between these two communities and fostering a mutually beneficial relationship.

**Keynote Address: Gone to the Grave: Burial Customs of the Arkansas Ozarks, 1850-1950**



The symposium's keynote address will be given at 4:30 p.m. Friday, Sept. 23, by author Abby Burnett.

Before there was a death care industry where professional undertakers offered embalming and factory-made caskets, residents of the Ozarks buried their own dead. Every part of this complicated, labor-intensive process was handled within the deceased's community by friends and neighbors. The various jobs—which had to be completed quickly, usually in twenty-four hours or less—included preparing the body for burial, building a wooden coffin, digging the grave and overseeing the burial ceremony, all the while a variety of customs and superstitions were observed.

These traditions, especially in rural communities, remained the norm up through the end of World War II. After this a variety of factors, primarily the loss of manpower and the rise of the professional funeral industry, brought about a complete change in the way people buried their dead. Though these customs are now long in the past, it has been possible to document the process through oral histories, letters, obituaries and folklore collections, not to mention the wealth of information found on early tombstones.

Abby Burnett will walk the audience through the burial process, illustrating her talk with early photographs, items from various museum collections and photos she has taken in cemeteries across the Ozarks.

*Contd. on page 2*

## FALL, 2016

### At the Ozarks Studies Symposium:

#### Thursday, September 22, 2016:

**Opening Reception**, On the Mezzanine, West Plains Civic Center

**5:00-7:00 PM - Sponsor: West Plains Council on the Arts**

**Isolation and Connections in the Ozarks: Images by Artists of the Region**

#### Friday, September 23, 2016:

Redbud and Gohn Rooms, West Plains Civic Center

**9:00 AM** - Chancellor Dr. Drew Bennett

Dean of Academic Affairs Dr. Dennis Lancaster

**Welcome and Opening Remarks**

**9:15 AM** - Dr. Sue Attalla, Former Associate Professor of Developmental English, Tulsa Community College

**From Camp Clark to Laredo and Beyond: The Ozark Dawg Song and Group Solidarity**

**9:45 AM** - Dr. Thomas Kersen, Associate Professor of Sociology, Jackson State University

**Close Encounters in the Ozarks: The Exploration of Anomalous Experiences and Socialization in Eureka Springs, Arkansas**

**10:30 AM** - Dr. Craig Albin, Professor of English, Missouri State University-West Plains

**"A Wood's Edge"**

**11:00 AM** - Kim McCully-Mobley, Adjunct Professor of English, Drury University

**Legends, Lore & Outlaws**

**11:30 AM** - Steve Sutton, Site Administrator, Thomas Hart Benton Home State Historic Site

**Thomas Hart Benton in the Ozarks**

**1:00 PM** - Steve Yates, Assistant Director and Marketing Director, University Press of Mississippi

Author Morkan's Quarry and Some Kinds of Love

**Sandy and Wayne: A Novella**

**1:30 PM** - Dr. Rajiv Thakur, Associate Professor of Geography, Missouri State University-West Plains

**Knowledge Economy in the Ozarks: Opportunities and Challenges Foreign**

**2:10 PM** - Dr. Mara W. Cohen Ioannides, Senior Instructor of English, Missouri State University

**Belonging to the Commune, but the Ozarks**

**2:40 PM** - Lynn Morrow, Former Director of the Local Records Preservation Program, Missouri State Archives

**Combat at Burnett Spring: Lessons for Ozarkers**

**3:20 PM** - Alex Primm, Oral History and Independent Scholar  
**Ozark Political Dynasties: The Carnahan Family and Their Connections to Public Service**

**3:50 PM** - Mark Morgan, Associate Professor, Department of Parks, Recreation and Tourism, University of Missouri-Columbia

**Hunting and Fishing Tales**

**4:30 PM** - Abby Burnett, Author

**Keynote: Gone to the Grave: Burial Customs of the Arkansas Ozarks, 1850-1950.**

#### Saturday, September 24, 2016:

Redbud and Gohn Rooms, West Plains Civic Center

**9:00 AM** - Dr. Jason McCollom, Associate Professor of History, Missouri State University-West Plains

**Thomas Callahan: Ozark Cosmopolitan**

**9:30 AM** - Dr. Jared M. Phillips, Adjunct Professor of History, University of Arkansas-Fayetteville

**Hipbillies and Guerilla Presses: Forging a Social Network across the Ozarks and Beyond in the 1970s**

**10:10 AM** - Dr. Jamie C. Brandon and Lydia I. Rees, Arkansas Archeological Survey

**Beyond the "Bluff Dweller": Isolation and Connection in Prehistoric Bluff Shelters of the Arkansas Ozarks**

**10:40 AM** - Dr. John J. Han, Professor of English and Creative Writing and Humanities Chair, Missouri Baptist University

**Isolated from the Church, Closer to Christ: Harold Bell Wright's The Calling of Dan Matthews**

**11:10 AM** - Eric Tumminia, Adjunct Professor of English, Missouri State University-West Plains

**Hardwood Hop: The Songs of Eric Bogwalker**

**1:00 PM** - Dr. Brian Hardman, Associate Professor of English, University of the Ozarks

**Isolation and Connection in the Ozarks: The Poetry of Miller Williams**

**1:30 PM** - Dr. Steve Wiegenstein, Program Director for Humanities, American Public University System

**This Land Isn't Your Land: The Rhetoric of Public Land Acquisition on the Current and Eleven Point Rivers**

**2:10 PM** - Allyn Lord, Director, Shiloh Museum of Ozark History

**William "Coin" Harvey and His Monte Ne Resort**

**2:40 PM** - Leslie Reed, English Instructor, Arkansas State University

**Life on the Fringes: The Desperate Reactions of Isolation and Marginalization in Daniel Woodrell's Tomato Red and The Death of Sweet Mister**

**3:10 PM** - Dr. Phillip Howerton, Associate Professor of English, Missouri State University-West Plains

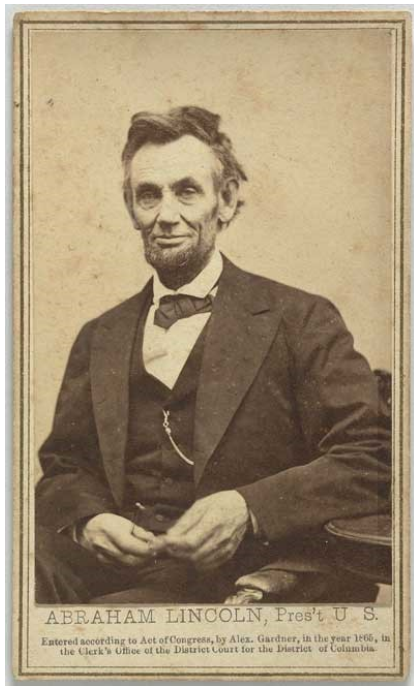
**The History of Trees & Closing Remarks**

Schedule subject to change—full, updated schedule available at

<http://ozarksymposium.wp.missouristate.edu/Schedule.htm>

Entrance to the symposium is free and pre-registration is not required. Those who attend will be invited to register on site when they arrive. The Ozarks Studies Committee is sponsoring this program in partnership with the Missouri Humanities Council and with support from the National Endowment for the Humanities.

Details on the speakers and their presentations are available at <http://ozarksymposium.wp.missouristate.edu/Presenters.htm>



### One Life: The Mask of Lincoln Smithsonian Travel- ing Exhibit at the Civic

This Smithsonian Traveling Exhibit, will be on display at the West Plains Civic Center "Gallery at the Center", November 2-27, 2016.

No American has had more written or said about him than Abraham Lincoln. To both his contemporaries and posterity, Lincoln has been an endless subject of mystery and fascination. To commemorate the bi-centennial of Lincoln's birth, this exhibition provides many faces of Lincoln from the museum's

collection, a collection that charts Lincoln's passage from a fresh-faced Illinois congressman to his grizzled isolation as president. One of the highlights is the rare appearance of the original cracked-plate portrait of Lincoln by Alexander Gardner. The exhibition also shows how Lincoln used the new art of photography to convey his image to Americans, letting them see in him what they most desired.

In the two-hundredth year since his birth, Abraham Lincoln remains as much a puzzle as he was to his contemporaries. That he came from nothing and was an obscure figure, almost to the moment of his nomination for the presidency, only adds to his mystery. His essential nature remains elusive, despite our best efforts to reveal the "real" Lincoln. Perhaps, though, that very mysteriousness is the key to his character and personality. Lincoln, with a supreme confidence in himself and an almost providential sense of his personal mission, was incredibly adroit in his ability to adapt to circumstances and shape events.

This exhibition concentrates on presidential portraits to show the changing face that Abraham Lincoln presented to the world as he led the fight for the Union. Shaping himself to the uncertainties of the present, mindful of his role as the heir to the Founding Fathers, Lincoln led the nation where it never intended to go: from a political crisis over states' rights to the revolutionary act of abolishing slavery. What is uncanny is how Lincoln moved toward this conclusion in public, before an audience fascinated and yet bewildered by the workings of an extraordinary mind.

West Plains Council on the Arts and Missouri State University-West Plains University/Community Programs department will co-host. A reception will be held November 3 at 8 p.m., immediately following the performance of "Danny Russel as Abraham Lincoln", which will be at 7 p.m. in the Civic Center theater. Travel from a log cabin to the White House in this compelling hour-long theatre performance by actor Danny Russel. Watch as young Abraham Lincoln overcomes hardscrabble poverty, fails in business, and finally unites a divided and broken nation. At the reception, you can mingle with "Honest Abe" himself, who will remain in character and costume throughout the evening.

Partial funding provided by Missouri Arts Council, a state agency.



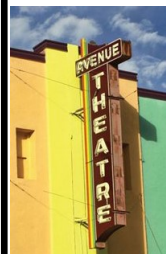
## Harlin Museum Fall Art Show

CALL FOR ENTRIES!!!

Entry dates September 9-10, 2016

Paint your town, our town or any town.

Still life, action, people, landscape or abstract are examples. Works may be oil, acrylic, pastels, watercolor and graphite. Maximum 3 entries per person at \$10 per entry. Awards and cash prizes offered. Show runs Sept 20 to Oct 15, 2016 at the Harlin Museum of West Plains, MO. Museum information at [www.harlinmuseum.com/index.php](http://www.harlinmuseum.com/index.php)



### COMING SOON:

The Avenue Theatre is excited to announce that soon we will be unveiling our new webpage:  
[TheAvenueTheatre.org](http://TheAvenueTheatre.org)

Coming in October!  
"Kutezy NOT for Kids"

Performances scheduled  
October 21, 22, 28 and 29  
at  
7 p.m. October 30, 3 p.m.



## Arts-Related Resource Links

Everyone says art and creativity are important, but are you wondering what the actual benefits of art are for kids?

<http://artfulparent.com/2016/01/the-benefits-of-art-for-kids.html>

Putting the A for art in STEM (science, technology, engineering and math) to make STEAM is too often treated as an afterthought. Yet art has played a major role in helping expand and appreciate new technologies, from the printing press to the smart phone. [http://www.edutopia.org/blog/more-heart-more-art-through-steam-stacey-goodman?](http://www.edutopia.org/blog/more-heart-more-art-through-steam-stacey-goodman?utm_source=twitter&utm_medium=socialflow)  
[utm\\_source=twitter&utm\\_medium=socialflow](http://www.edutopia.org/blog/more-heart-more-art-through-steam-stacey-goodman?utm_source=twitter&utm_medium=socialflow)

Five Ways Arts Education Is Closing Opportunity Gaps in Guilford County

<http://blog.americansforthearts.org/2016/07/20/five-ways-arts-education-is-closing-opportunity-gaps-in-guilford-county>



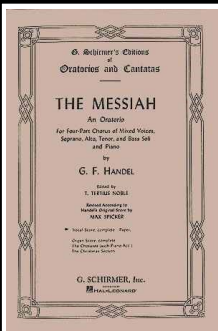
**WPCA NEWSLETTER**  
**P.O. Box 339**  
**West Plains, MO 65775**

**WPCA receives funding from the**  
**Missouri Arts Council, a state agency.**



Presort  
NON-PROFIT ORG.  
U.S. POSTAGE PAID  
West Plains, MO  
Permit No. 9

## COMMUNITY MESSIAH SING



West Plains Council on the Arts invites everyone to a Community Messiah Sing directed by Larry Dame, scheduled for Sunday, November 6, 2016, 2:30p.m. at First Presbyterian Church, 112 Aid Avenue in West Plains, Missouri.

The Christmas portion of "Messiah", using the G. Schirmer score, will be performed. The audience is invited to sing along in these favorite Messiah choruses.

Practice CD's and scores are available. Call Kathleen Morrissey at 417-293-7751 if interested. Bring your own score, or borrow one of ours.

Open seating; no advance reservations required. Non-singers are also welcome to listen and enjoy!

Sponsored by West Plains Council on the Arts, with partial funding provided by Missouri Arts Council, a state agency.

West Plains Council on the Arts board members include Cathy Profitt-Boys, Carol Bruce, Kathy Campbell, Terri Combs, Judy Harden, and Paula Speraneo, and Arts Administrator Kathleen Morrissey. EMAIL: [info@westplainsarts.org](mailto:info@westplainsarts.org) WEBSITE: <http://www.westplainsarts.org>